

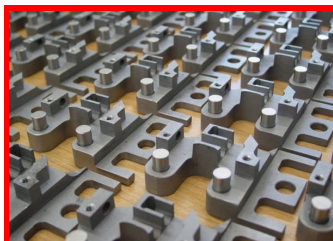
5459 11th Street  
Rockford, IL 61109  
815-874-8217 Fax 815-874-5044  
www.thomasonmachine.com

*Established  
1978*

# ***CNC Milling and Turning*** ***Production and Prototype Quantities***

**Milling  
Turning  
Tapping  
Grinding  
Honing**

**EDM  
CAD-CAM**



# Thomason Machine Works, Inc.

Proudly uses BobCAD-CAM software as our primary CAD software.

We can also support files from AutoCAD, Catia, GibbsCAM, KeyCreator, MasterCAM, Surfcam, Solidworks, and more. Or any of the following file extensions: .3dm, .asc, .cad, .cct, .dgn, .dwg, .dxf, .igs, .iges, .sat, .stp,

## Facilities

Since 1978 Thomason Machine Works, Inc. has been providing machining services of unparalleled quality. We are a second generation family owned business and with the addition of our new facility we now have over 37,000 square feet to serve our customers.



5459 11th Street, Rockford, IL

### Capabilities

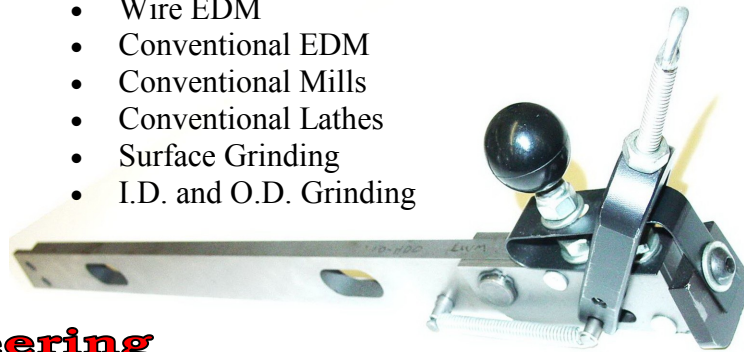
- We can work with most materials from standard to exotic
- Precision machining from micro to large parts
- Turning capabilities up to 20" dia.
- Milling capabilities up to 48" long
- Hold tolerance to 0.0002"

### Equipment

- CNC Machining Centers
- CNC Turning Centers
- Wire EDM
- Conventional EDM
- Conventional Mills
- Conventional Lathes
- Surface Grinding
- I.D. and O.D. Grinding

### Materials

- Most Tool Steels
- Most Alloy Steels
- Stainless Steel
- Aluminum
- Cast Iron
- Plastic
- Copper
- Many Exotics



## Reverse Engineering



We can reverse engineer worn out or broken parts and produce new parts, or if you have equipment that is repeatedly causing you problems we can redesign to improve the life expectancy of your product.



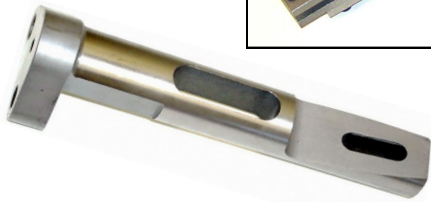
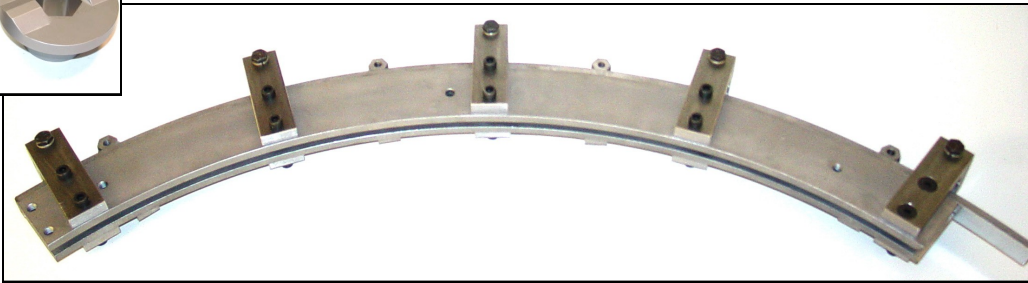
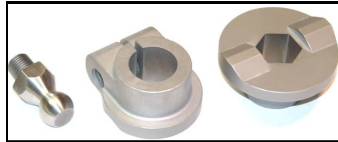
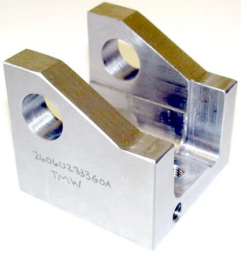
**#1 In Quality and Precision  
Since 1978**

[www.thomasonmachine.com](http://www.thomasonmachine.com)

## Industries Served

- **Aerospace**
- **Automation Components**
  - Manifolds
  - Transfer Fingers
  - Sensor Brackets
  - Slide Assemblies
  - Specialized Jaws
  - Feed Escapements
  - Roll Sorters
- **Beverage**
  - Nozzles
  - Fittings
  - Plungers
  - Valve Bodies
- **Fastener Industry**
  - Header Repair Parts**
    - Punch Blocks
    - Transfer Heads
  - Roll Thread Repair Parts**
    - Rail Assemblies
    - Starter Arms
    - Starter Fingers
- **Fluid Control**
  - Valve Components
  - Manifolds
  - Cartridge Bodies
  - Stems
  - Vent Tubes
- **Government**
- **Instrumentation**
  - Sleeves
  - Covers
  - Housings
  - Insulators & Rods
- **Medical Instruments**
- **Motion Control**
  - Motor Shafts
  - Rotors
  - Piston Rods
  - Piston Heads
  - Push Rods
  - Cylinders
  - Housings
  - Couplings





# ***Machinery and Equipment List***



## **CNC TURNING EQUIPMENT**

- 3 - Hyundai HIT 15S CNC Turning Center with 8" Dia. Chuck
- 1 - Hyundai HIT 30S CNC Turning Center with 12" Dia. Chuck
- 1 - Hyundai HIT 8 CNC Turning Center with 6" Dia. Chuck
- 1 - Haas SL-20 CNC Turning Center with 8" Dia. Chuck
- 1 - Haas SL-30 CNC Turning Center with 12" Dia. Chuck

## **CNC VERTICAL KNEE MILLS**

- 1 - Dyna Myte EM3116
- 3 - ProtoTRAK M2's

## **CNC VERTICAL MACHINING CENTERS**

- 1 - HAAS VFOE CNC Vertical Machining Center with 18 tools
- 1 - HAAS VF-3 CNC Vertical Machining Center with 24 tools
- 1 - HAAS VF-4 CNC Vertical Machining Center with 20 tools
- 1 - HAAS Mini Mill Vertical Machining Center with 10 tools
- 2 - Dyna Myte 4800 Vertical Machining Center with 24 tools
- 5 - Dyna Myte 4500 Vertical Machining Center with 16 tools

## **MANUAL MILLING EQUIPMENT**

- 2 - Lagun FTV-2 Vertical Mill with digital readout, power feed, power drawbar
- 2 - Webb Vertical Mill with digital readout, power feed, power drawbar
- 2 - Bridgeport Series 1 Vertical Mills with power feed, power drawbar
- 1 - Chevalier Vertical Mills with power feed, power drawbar

## **MANUAL TURNING EQUIPMENT**

- 1 - Monarch Lathe with 14" swing and digital readout
- 2 - Harding TFB-H with 11" swing and 20" length
- 2 - Clausing Colchester Lather with 15" swing, and digital readout
- 1 - Turnmaster Lathe with 15" swing, and digital readout
- 2 - DoAll 13 with 13" swing, and digital readout
- 1 - Lansing G Lathe with 24" swing and 144" length capacity

## **GRINDING AND HONING EQUIPMENT**

- 2 - Kent RGS-410AHD Surface Grinder with 20" x 40" capacity
- 1 - Chevalier FSG-1224AD Surface Grinder with 12" x 24" capacity
- 1 - Proth Surface Grinder with 10" dia. x 19-1/2" capacity
- 1 - Tos Hostivar B4-28 I.D. and O.D. Grinder with 12" swing
- 1 - Shigiyu Seiki G-27 O.D. Grinder with 12" swing
- 1 - Sunnen MBB-1660 Hone
- 1 - Sunnen MBC-1804 Stroker Hone

## **EDM EQUIPMENT**

- 2 - Charmilles Robofil 310 Wire EDM
- 1 - Chevalier ED-252, 30 amp Plung EDM

## **MISCELLANEOUS EQUIPMENT**

- 1 - Peerless C-26A Automatic Horizontal Production Band Saw
- 1 - Gage Master Series 20 Optical Comparitor
- 1 - Peerless Champ "P" Horizontal Band Saw
- 1 - Clausing Cosen Horizontal Band Saw
- 1 - Blastmaster RA-36-1 Sand Blaster
- 2 - Oxygen and Acetylene Torch Sets
- 1 - Blastmaster RA-18 Sand Blaster
- 1 - Rams Rockford Rockwell Testor
- 1 - Manley 60 Ton Hydraulic Press
- 2 - Grob Vertical Band Saw
- 1 - Miller Heliarc Welder
- 2 - 20 Ton Arbor Press
- 1 - Miller Mig Welder

